

Flat Panel Directional Antenna 2400 to 2485 MHz Operation

Features:

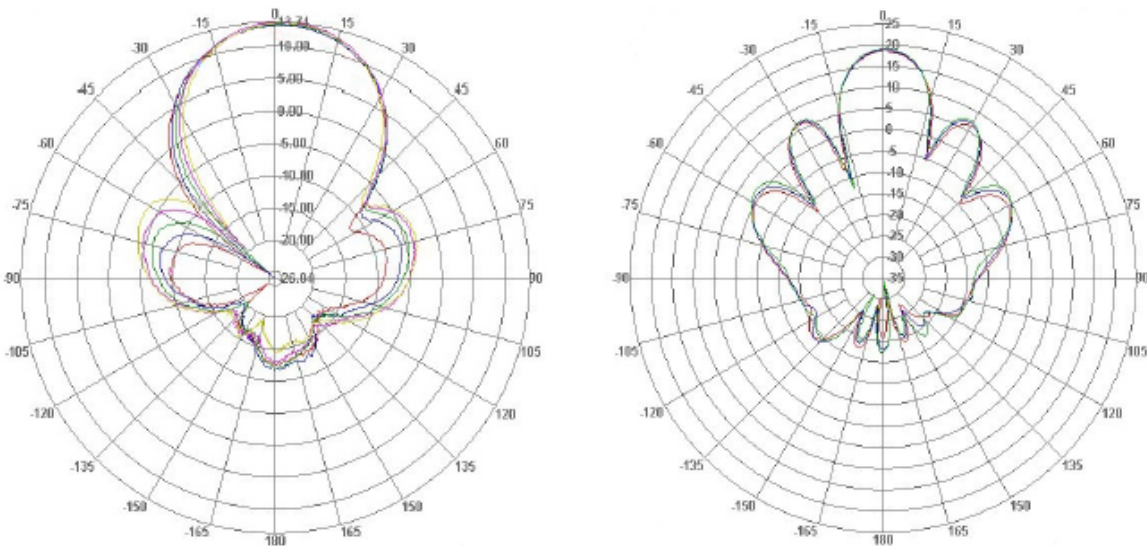
- High Gain / Low Profile
- Pole Mount or Surface Mount
- Rugged and Weatherproof
- Vertical or Horizontal Polarization
- Type N Female Connector



Description:

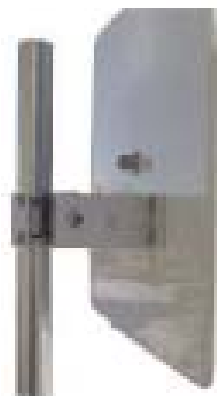
The 2.4GHz Flat Panel Directional antennas by ibridge Networks Inc. offer high gain in a thin low profile package. The antennas are constructed of a gray color UV Resistant ABS plastic radome with an aluminum backplate. The antenna can be used in Horizontal or Vertical Polarization. The Die Cast Aluminum bracket affords +/- 45 deg up or down tilt adjustment and the stainless steel hardware assures a long service life. The antenna can be surface mounted or pole mounted. The antenna comes with an integral N Female connector standard.

Antenna Patterns @ 2.4GHz



SPECIFICATION

Parameter	Model	Min	Typ	Max	Units
Frequency Range	ibFP24-13 ibFA24-19	2400		2483	MHz
Input Return Loss (S_{11})			-14		dB
VSWR			1.5:1		
Impedance			50		OHM
Input Power				100	W
Pole Diameter (OD)		1 5		1.5 38	inch mm
Operating Temperature		-45		+70	Deg C
Gain	ibFP24-13 ibFA24-19		13 19		DBi
Horizontal Beam Width	ibFP24-13 ibFA24-19		35 17.5		Deg
Vertical Beam Width	ibFP24-13 ibFA24-19		35 17.5		Deg
Front to Back	ibFP24-13 ibFA24-19	20 30			dB
Cross Polarization			20		dB
Pole Size		1" (25)		2.5" (64)	In (mm)
Weight	ibFP24-13 ibFA24-19	17.6(0.5) 60(1.7)			Oz(kg)
Dimension (Dia x Depth)	ibFP24-13 ibFA24-19	7.5" x 7.5" x 0.8"(190 x 190 x 20) 15.4" x 10.6" x 0.8" (390 x 270x 21)			In (mm)
Bracket Tilt			45		Deg



Marketed & Distributed In INDIA:

BRIJ INFOTECH PVT. LTD.

A4/16, Siddharth Nagar II, Goregaon (West), Mumbai- 4 00 062

Tel: 022 28789630. Email: sales@brijindia.com. URL: www.brijindia.com

ibridge Networks Inc.

28, Bedford Road, East Ham, London, E6 2NN, UK