

Sector Antenna Systems 2400 to 2483 MHz Operation

Features:

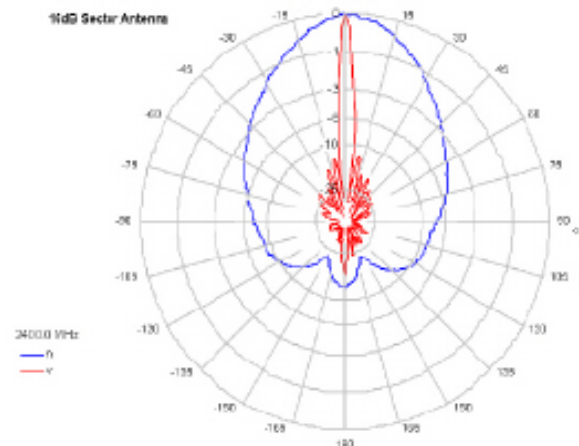
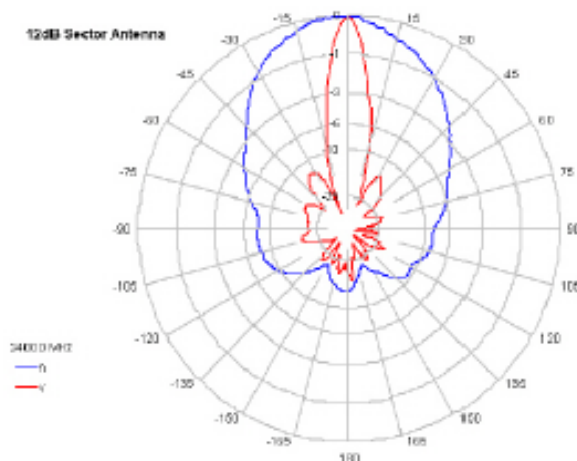
- **Horizontally Polarized – Rejects Vertically Polarized Interference**
- **95 Degree Horizontal Beamwidth**
- **12dBi and 16.5dBi antenna gains**
- **Two bracket choices**
- **Super Rugged and Lightweight,**



Description:

The Sector antenna systems offered by ibridge networks Inc. are constructed from rigid aluminum extrusion, these units are powder coated and sealed with PTFE (Teflon) tape providing lightweight, rigid, weatherproof units. They feature 50 ohm passive feeds that come standard with type N female connectors. Pacific Wireless offers two different bracket systems with these antennas: A) The super heavy duty single point galvanized bracket system is designed for ease of installation and pole-top mounting B) The all stainless steel 2 point scissor bracket gives increased stability and improved downtilt adjustment accuracy. Both brackets offer 10deg of mechanical downtilt. The N connector is positioned on the front/transmission side of the sector.

Integrated Antenna Patterns



Specifications:

Parameter	Min	Typ	Max	Units
Frequency Range	2400		2483	MHz
Input Return Loss (S₁₁)		-14		dB
VSWR		1.5:1		
Impedance		50		OHM
Input Power		100		W
Pole Diameter (OD)				
g- Single Point Bracket	2 (53)		2.5 (60)	inch
s- SS 2 Point scissor Bracket	1 (25)		2 (53)	mm
Operating Temperature	-30		+65	Deg C

2400 - 2483 MHz	ibSAH24_12	ibSAH24_16
Gain	12dBi	16.5dBi
Horizontal Beam Width	95 deg	95 deg
Vertical Beam Width	18 deg	7 deg
Polarization	Horizontal	Horizontal
Cross Pole	>25 dB	>25 dB
Front to Back	>14dB	>13.4dB
DownTilt (Mechanical)	10 deg	10 deg
Weight (with bracket)	6 Lbs	9 Lbs
Dimension (L x W x H)	23" x 4" x 1"	49.5" x 4" x 1"



2 Point Stainless Steel Scissor Bracket Design



Single Point Bracket Design

Marketed & Distributed In INDIA:

BRIJ INFOTECH PVT. LTD.

A4/16, Siddharth Nagar II, Goregaon (West), Mumbai- 4 00 062

Tel: 022 28789630. Email: sales@brijindia.com. URL: www.brijindia.com

ibridge Networks Inc.

28, Bedford Road, East Ham, London, E6 2NN, UK